



With several small developments in Richmond, Putney and Wimbledon under his belt, Paul Crowther was keen to make a move into Theatreland.

Covent Garden has a community of well-heeled creatives and is the ideal place for him to show off his flair for high quality interior design. "In the past, I wasn't able to push the design because the area couldn't quite take it", he says.

Last year 21st Century Developments bought premises on Long Acre that were occupied by the Royal Ballet School. The scheme, called Balletica, consists of three homes above fashion retailer Zara. They are now nearing completion.

Crowther describes Balletica's design stamp as "textural and tactile". Earthy finishes include stone, polished plaster, oak and walnut, as well as leather and suede furnishings. Two 1,500 sq ft apartments and a 2,500 sq ft penthouse are priced at £1.2 million and £2.1 million respectively.

Call 21st Century Developments on 020 7384 3344.



MARK YORK

Dance away: Paul Crowther designed the interiors for Balletica, once occupied by the Royal Ballet School, but now converted into homes

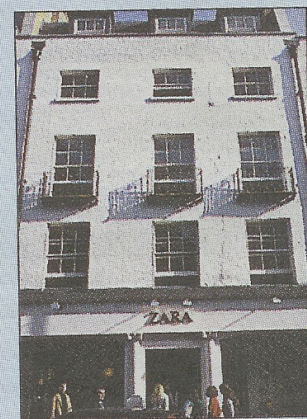
## Making his Theatreland debut

WITH several small developments in Richmond, Putney and Wimbledon under his belt, Paul Crowther was keen to make a move into Theatreland.

Covent Garden has a community of well-heeled creatives and is the ideal place for him to show off his flair for high-quality interior design. "In the past, I wasn't able to push the design because the area couldn't quite take it," he says.

Last year, 21st Century Developments bought premises on Long Acre that were occupied by the Royal Ballet School. The scheme, called Balletica, consists of three homes above fashion retailer Zara. They are now nearing completion.

Crowther describes Balletica's design stamp as "textural and tactile". Earthy finishes include stone, polished plaster, oak and walnut, as well as leather and suede furnishings. Two 1,500sq ft apartments and a 2,500sq ft penthouse are priced at £1.2 million and £2.1 million respectively. Call 21st Century Developments on 020 7384 3344.



MARK YORK

From £1.2 million: the Balletica scheme consists of two flats and a penthouse on Long Acre, WC2